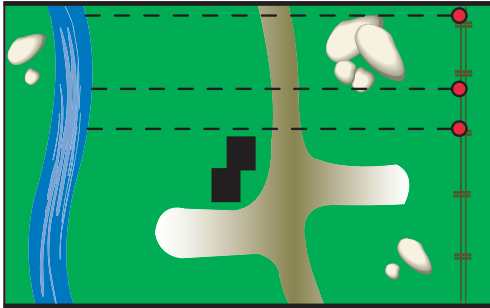


MAPSMART MAPPING SOFTWARE FOR THE NON-SURVEYOR

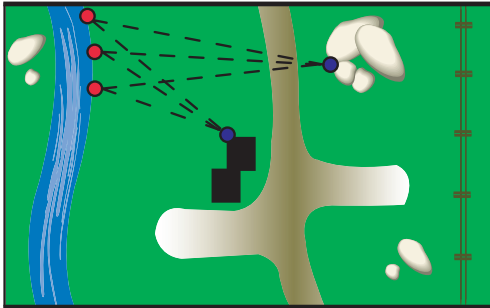
If you're a non-surveyor faced with a surveying task, the last thing you need is software you can't understand. With LTI's new MapSmart, you'll be mapping like an expert in minutes. Collect and store data points electronically and easily transfer them to your PC. From there you can view the data in text format (*.txt, *.csv), as a bitmap image or open it in any CAD program (*.dxf).

KEY: ● = Occupied Point ● = Target/Control Point

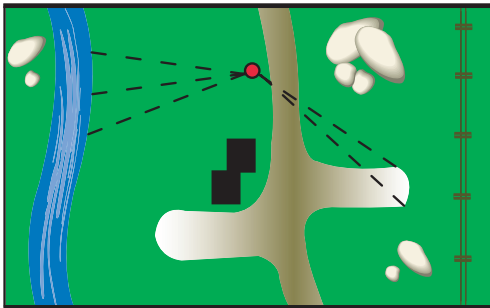
Choose Among 4 Mapping Techniques:



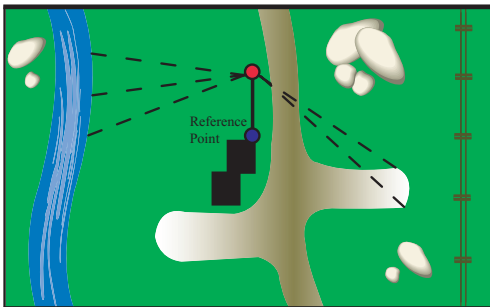
The **Baseline Offset** method is best used for mapping long, narrow areas such as railroad or pipeline right-of-ways. Simply obtain your coordinate locations with a shot along the baseline and a second shot at a right angle offset to the target.



The **Range Triangulation** method is best used on small scale projects, such as an archeological dig or other site map. First, choose two targets to use as a control points. Then locate each feature by simply standing at it and shooting a distance to both targets.



The **Radial with Azimuth** method is best for larger projects with multiple targets to locate, for example a stockpile or a long boundary traverse. With this routine you are able to locate your points with a single shot that instantly combines azimuth and distance. (MapStar Compass Module II needed)



The **Radial with Angle** method offers the same advantages as the Azimuth method with the addition of a single reference shot from each instrument point. With the MapStar Angle Encoder, you can obtain a higher degree of angular accuracy and be unaffected by local magnetic interference found in urban areas.

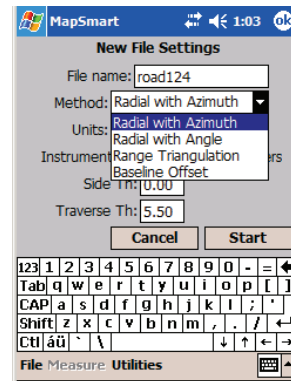
(MapStar Angle Encoder needed)

MapSmart Key Features:

- Upload a custom list of descriptions from your PC to quickly identify common measurement points.
- Choose between several available mapping methods to accommodate every situation that you may encounter.
- Work with a "live" map display that allows you to quality check your data as you go.
- Review the Point Detail function to verify distances and azimuth between any two points.
- Calculate areas and traverse closures to quality check your data before you leave the field.
- Utilize the on-board solutions for Area, Volume and the Closure error of a traverse.

Basic Package Includes:

- MapSmart Software (for Pocket PC 2003 on the Recon and iPAQ data collector)
- Electronic & Printed User's Guide



#	X	Y	Z	Note
1	0.00	0.00	0.00	Origin
2	-15.56	15.56	7.42	topo
3	0.00	0.00	5.50	topo
4	15.56	-15.56	3.58	topo
5	31.11	31.11	0.00	topo
6	21.82	51.05	7.42	topo
7	31.11	31.11	5.50	topo
8	40.41	11.17	3.58	topo
9	74.95	34.95	0.00	topo

